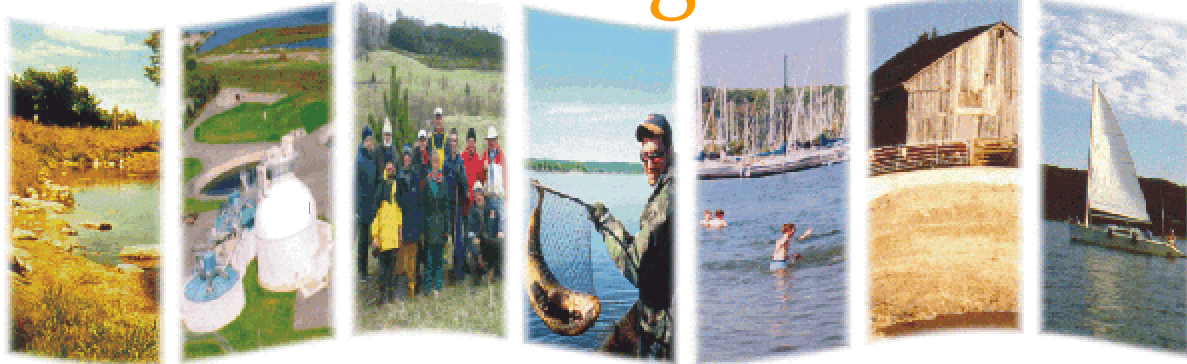


Severn Sound Environmental Association

Tiny Beaches Investigation 2005



Canada



Canada-Ontario Agreement
Respecting the Great Lakes Basin Ecosystem

Ontario

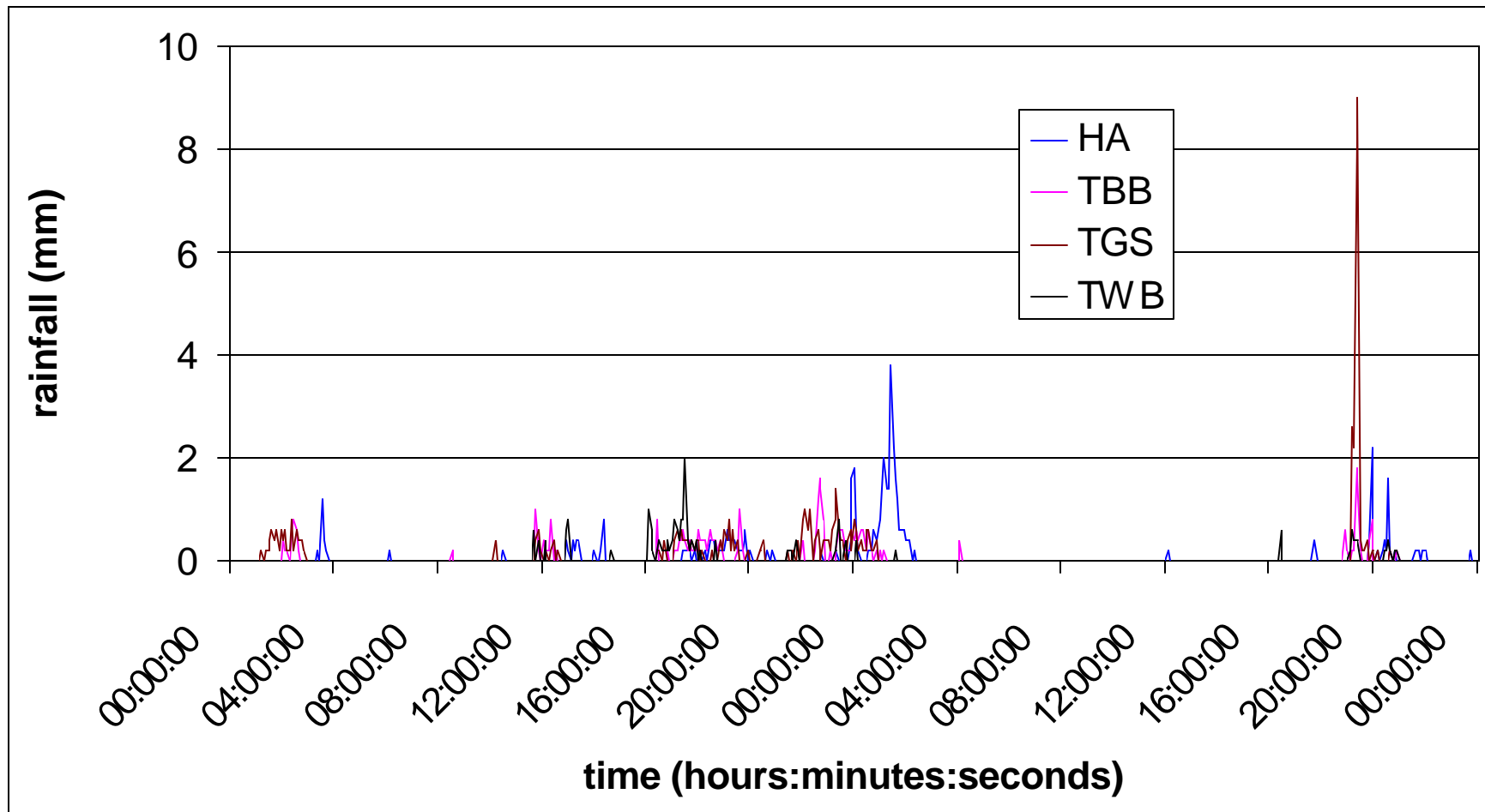
Outline

- Rainfall measurement
 - Stream investigations
 - Air photo interpretation
 - Sediment investigations
 - Research by others
-

Tipping-bucket Recording Rain gauge (Model TB3)

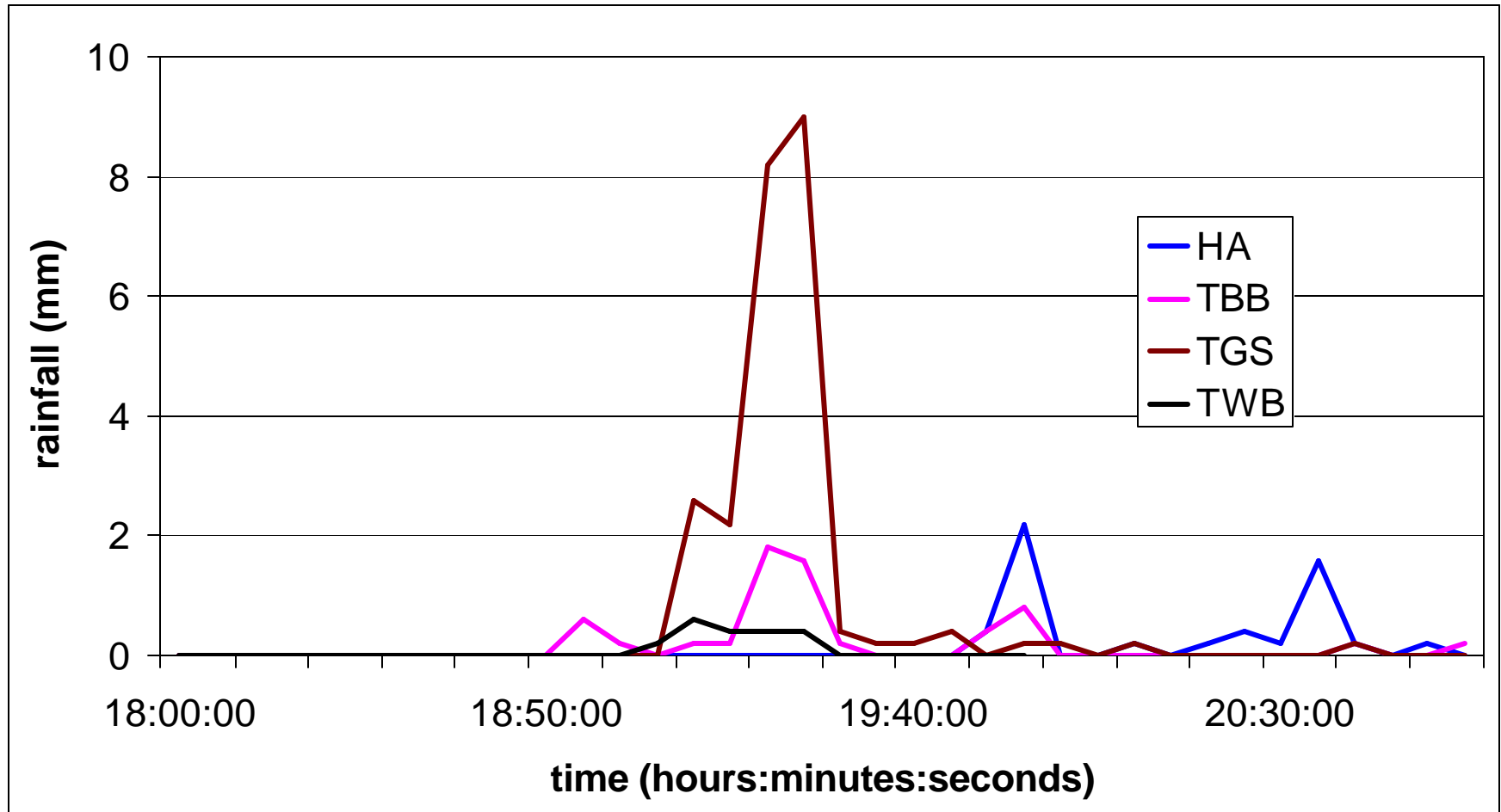


Rain event on June 13 & 14, 2005

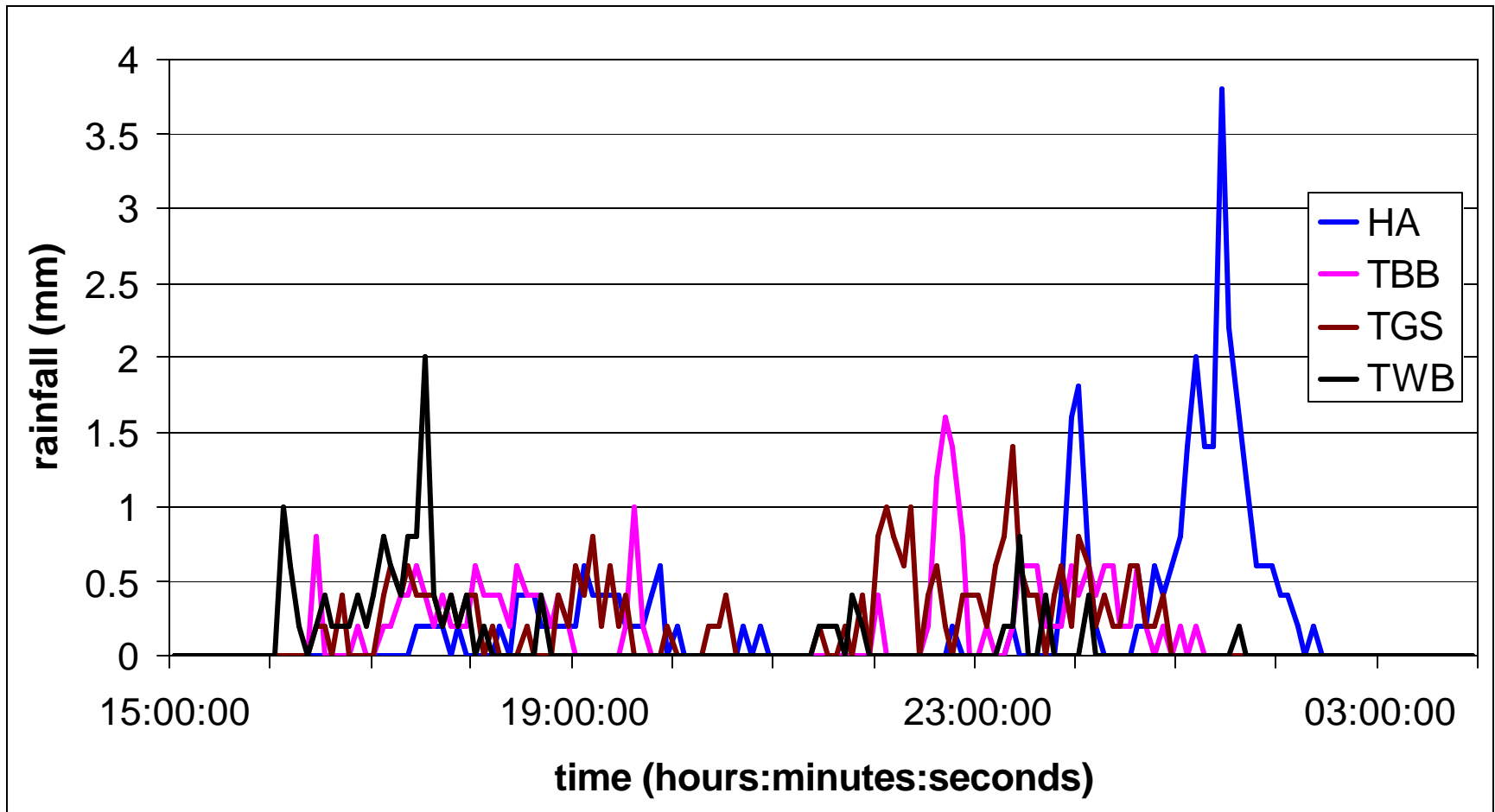


(average daily rainfall = 42.1 mm from June 13 05 08:00 to June 14 05 07:55)

Rain event on June 14, 2005 18:00 to 21:00

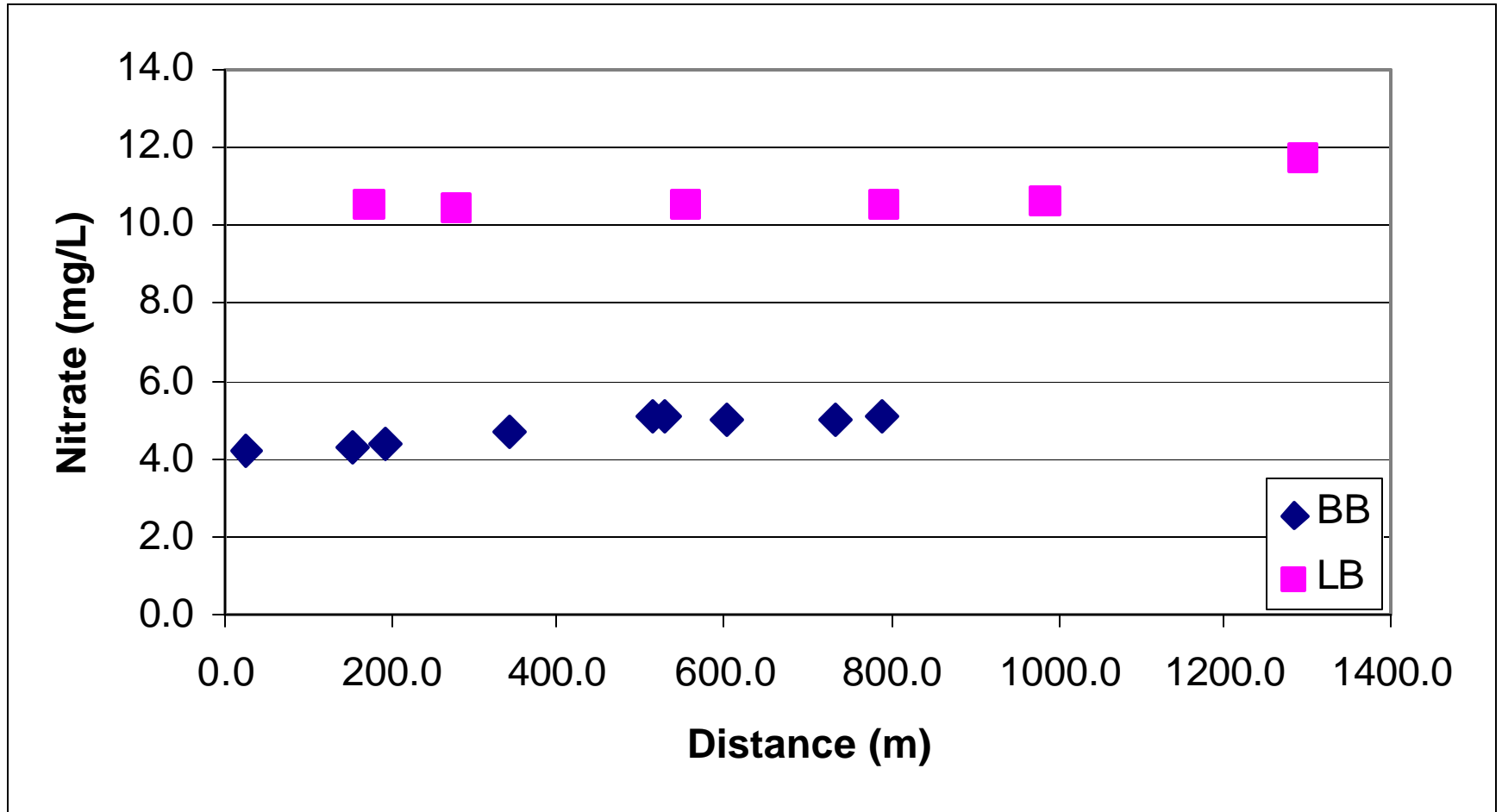


Rain event from June 13, 15:00 to June 14, 03:00



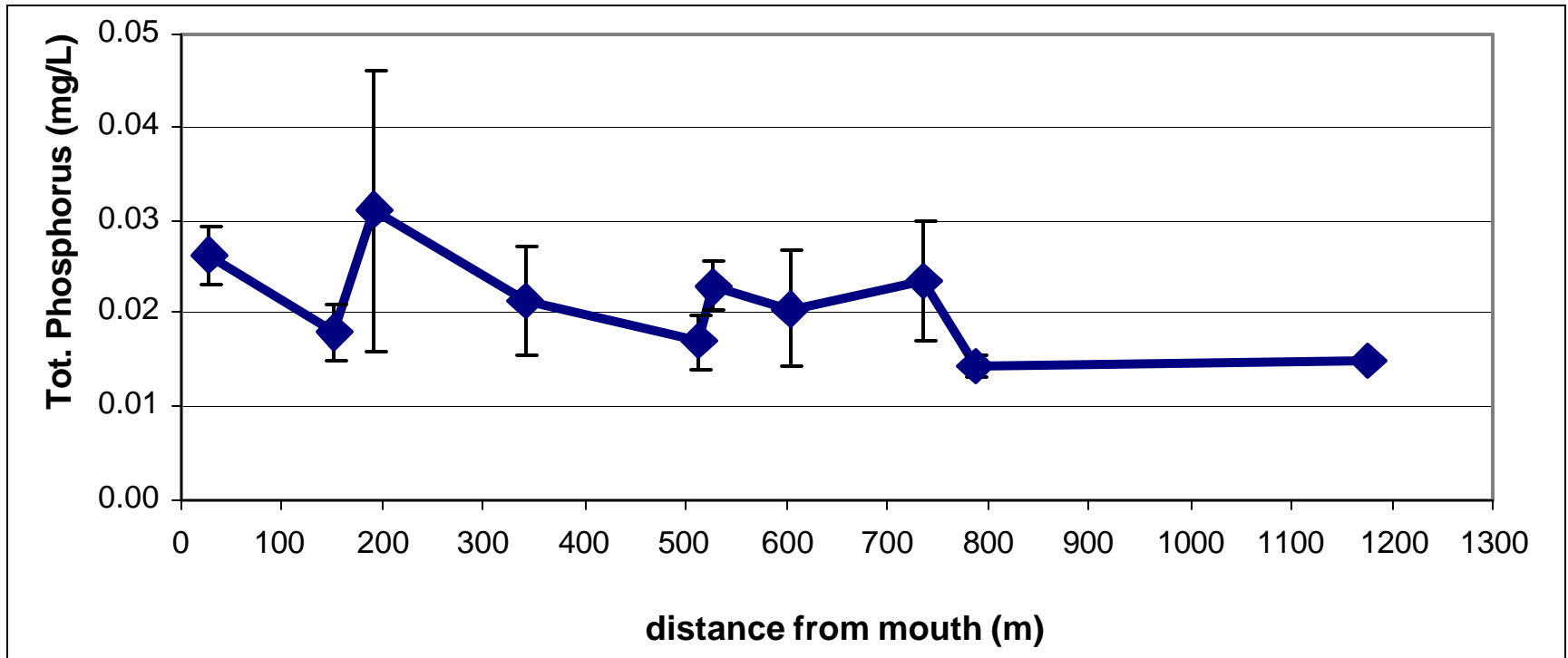


Mean quality profile of Big and Little Balm Creek 2005 (Average of 4 sample runs, except for upstream point)



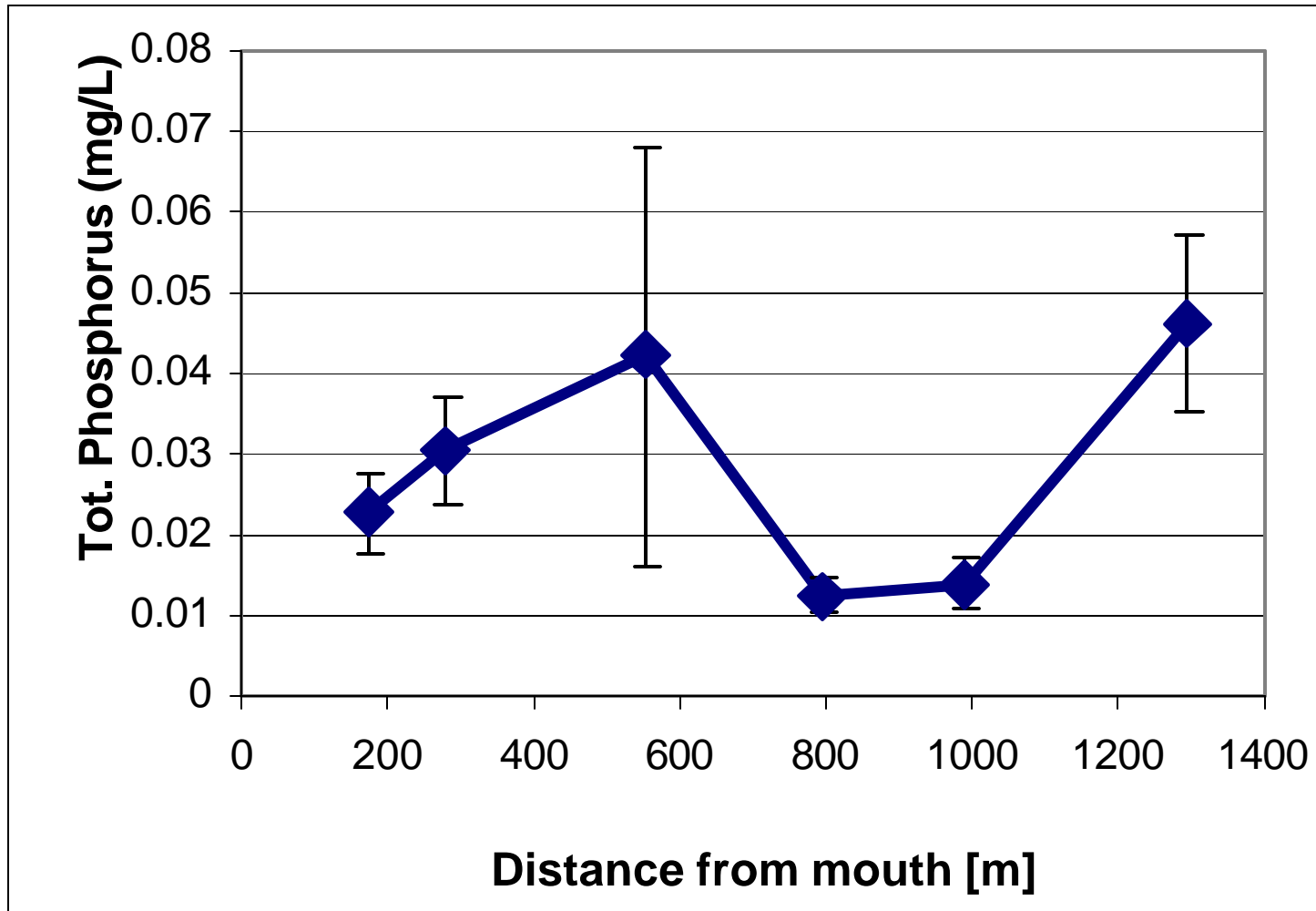
Mean quality profile of Big Balm Stream 2005

(Average of 4 sample runs, except for upstream point)

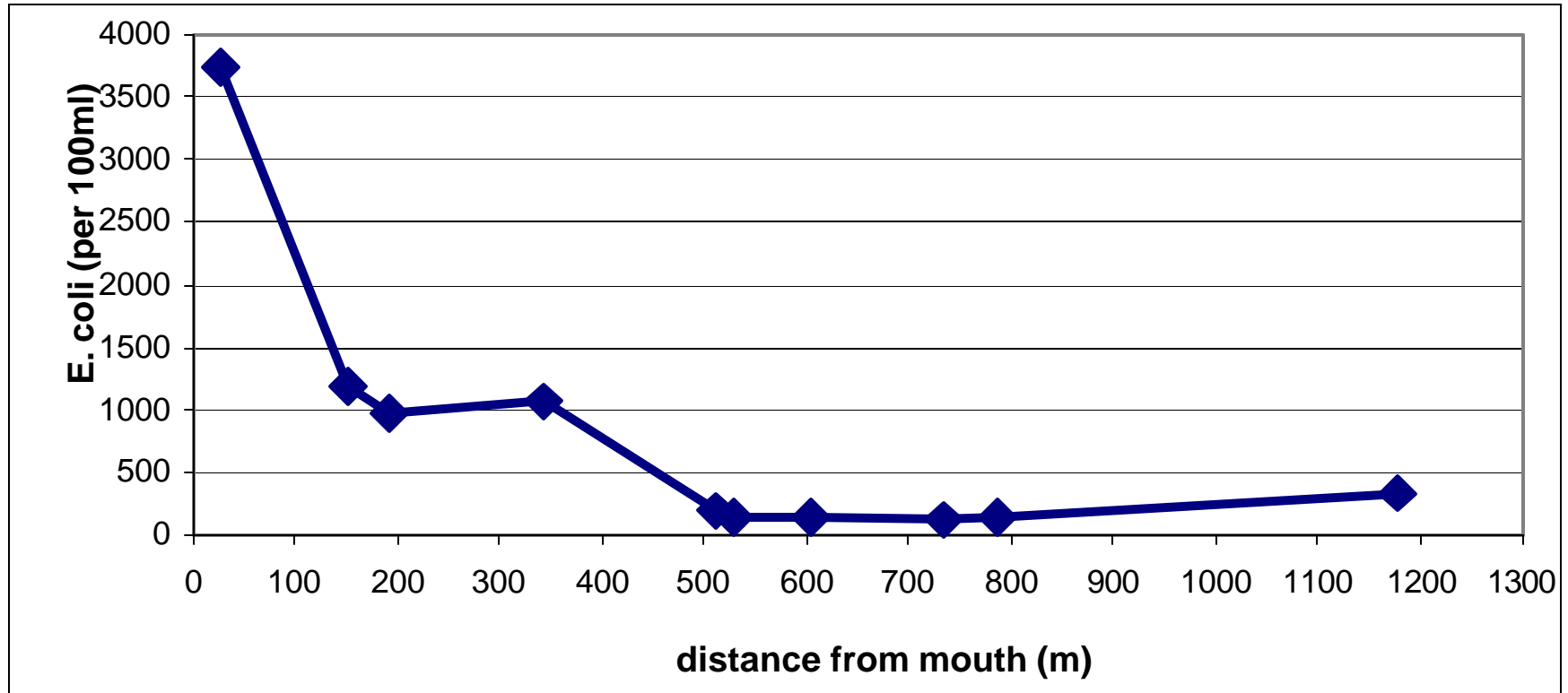


Mean quality profile of Little Balm Stream 2005

(Average of 4 sample runs, except for upstream point)

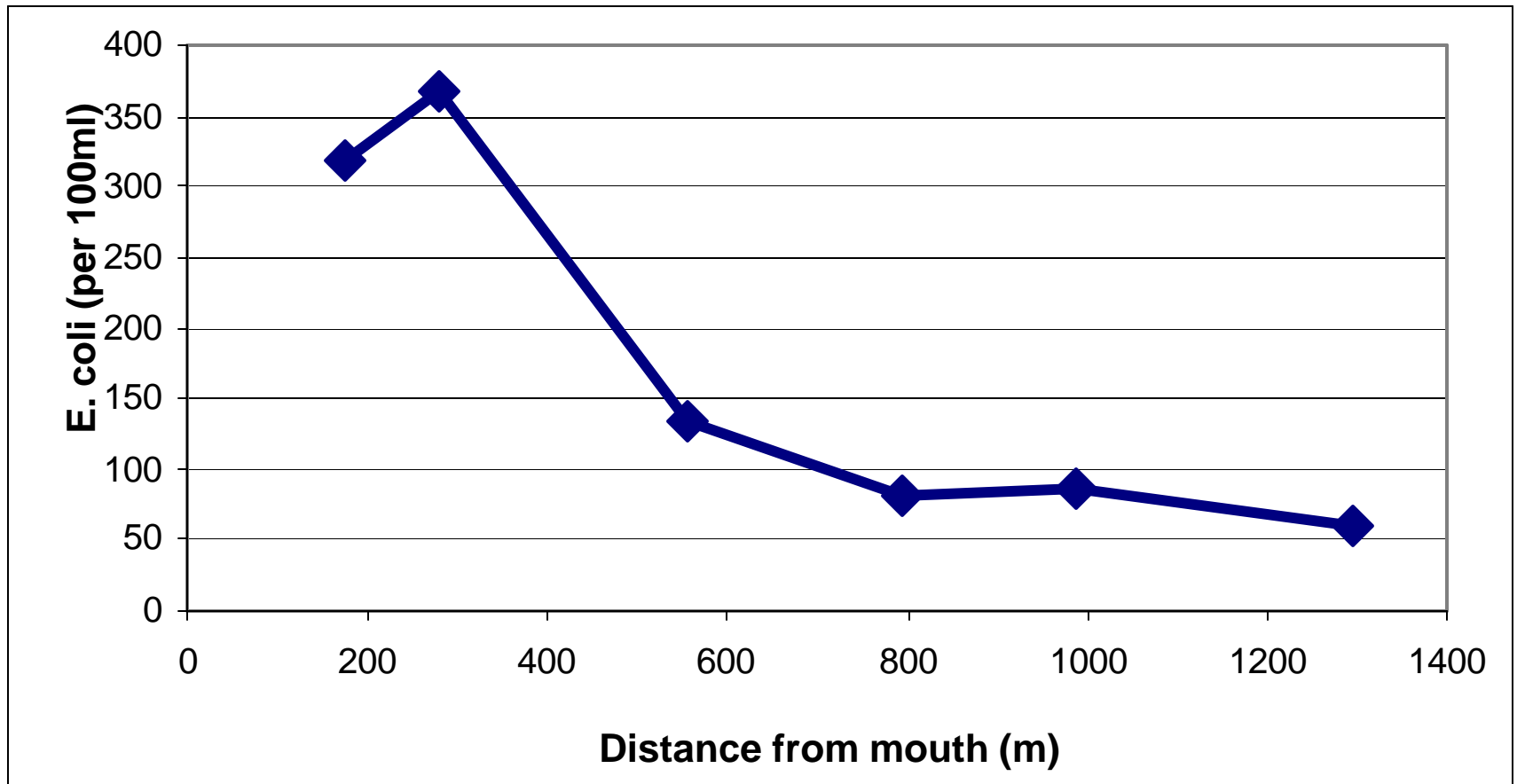


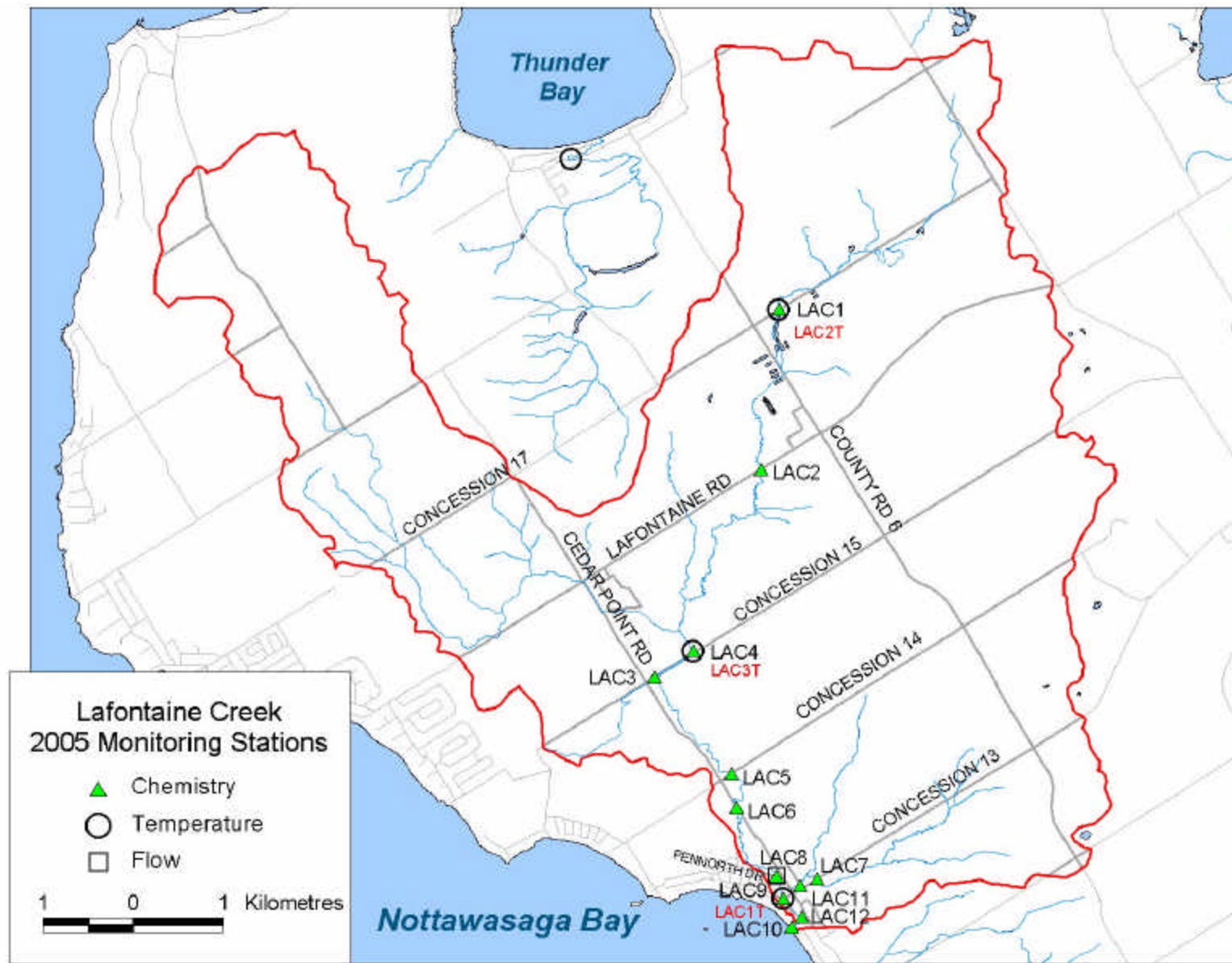
Mean quality profile of Big Balm Stream 2005 (Geomean of 4 sample runs, except for upstream point)



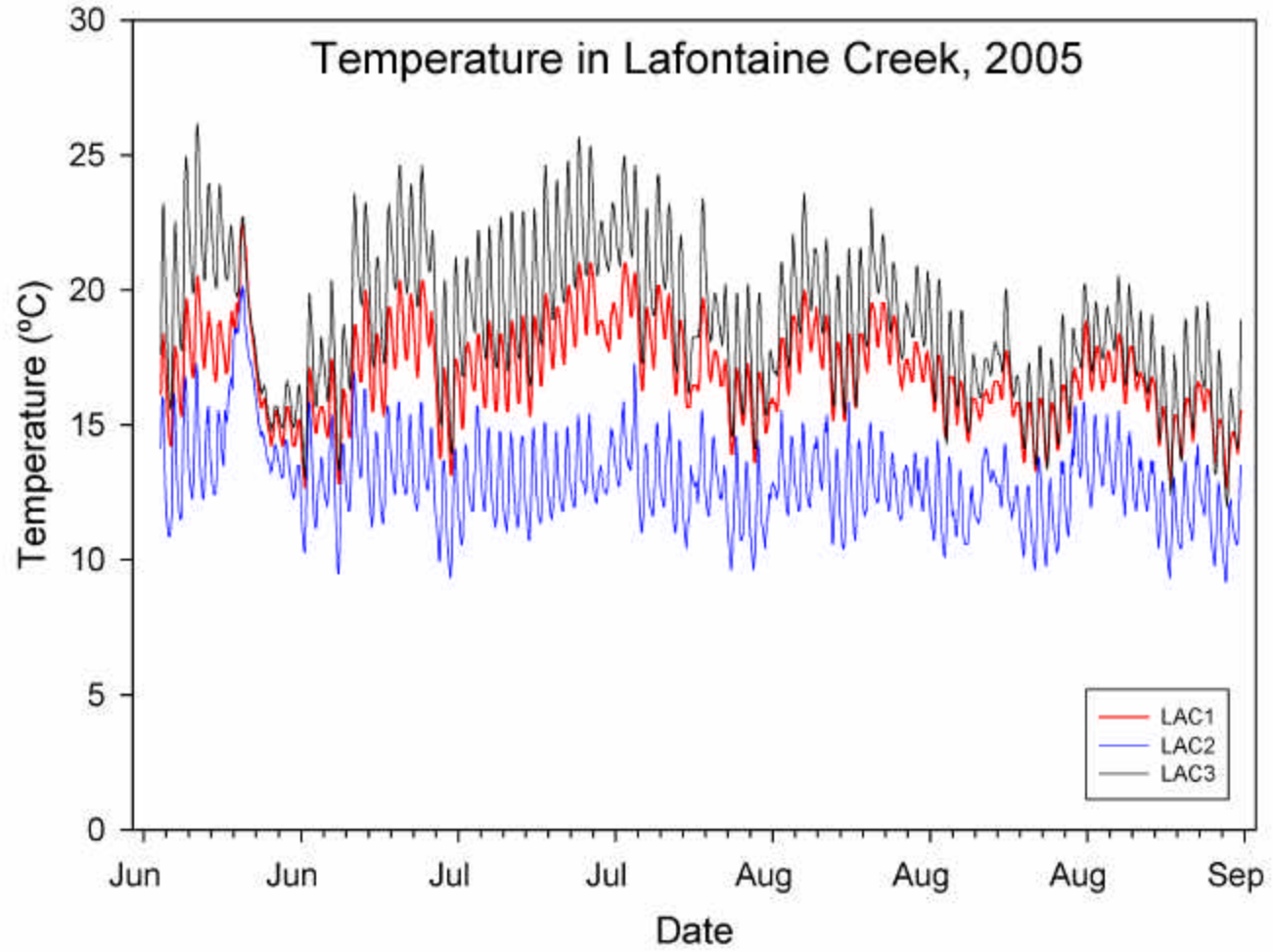
Mean quality profile of Little Balm Stream 2005

(Average of 4 sample runs, except for upstream point)





Produced by the Severn Sound Environmental Association under license by Members of the Ontario Geospatial Data Exchange, 2005.





Sediment Investigation





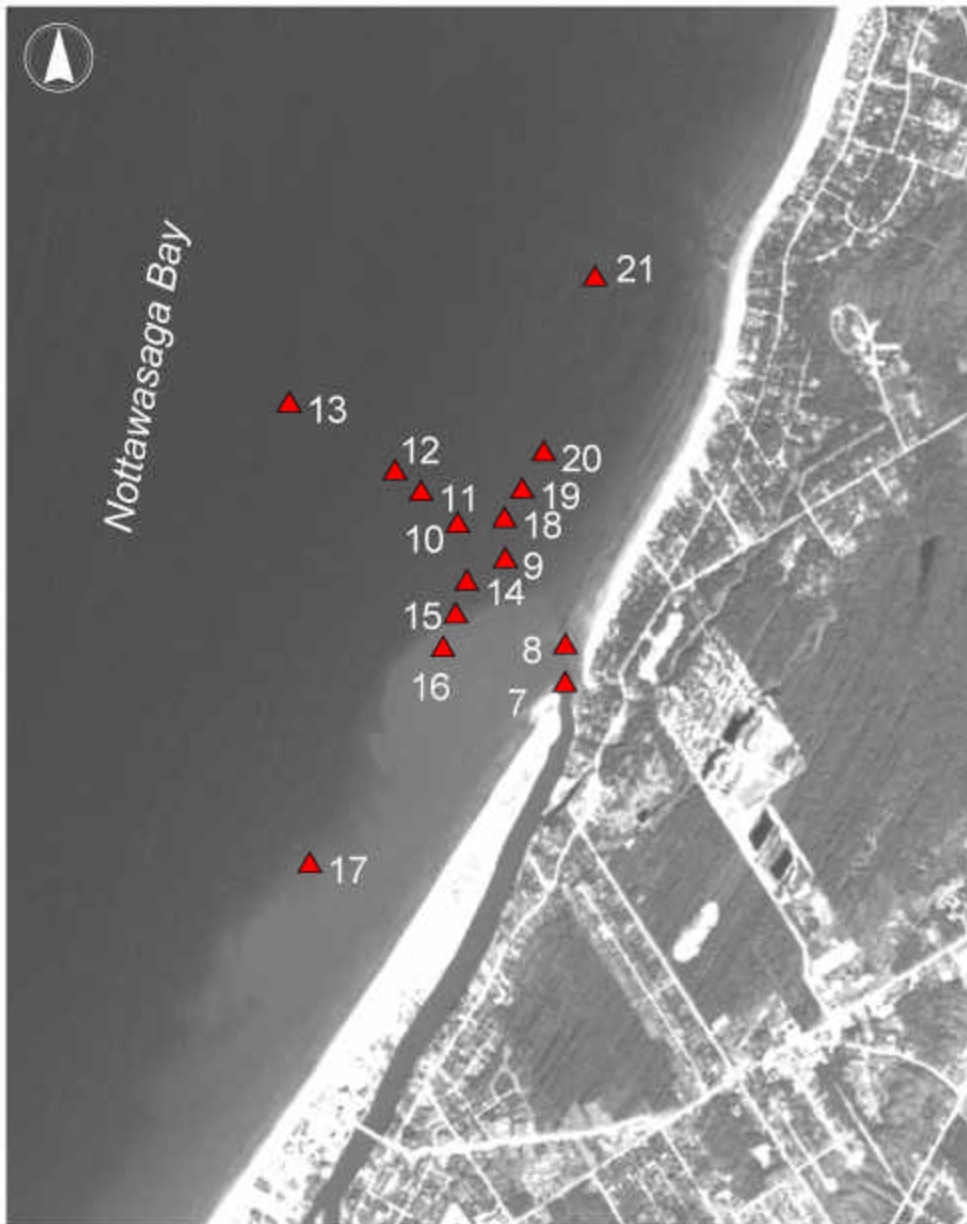


2005



2004



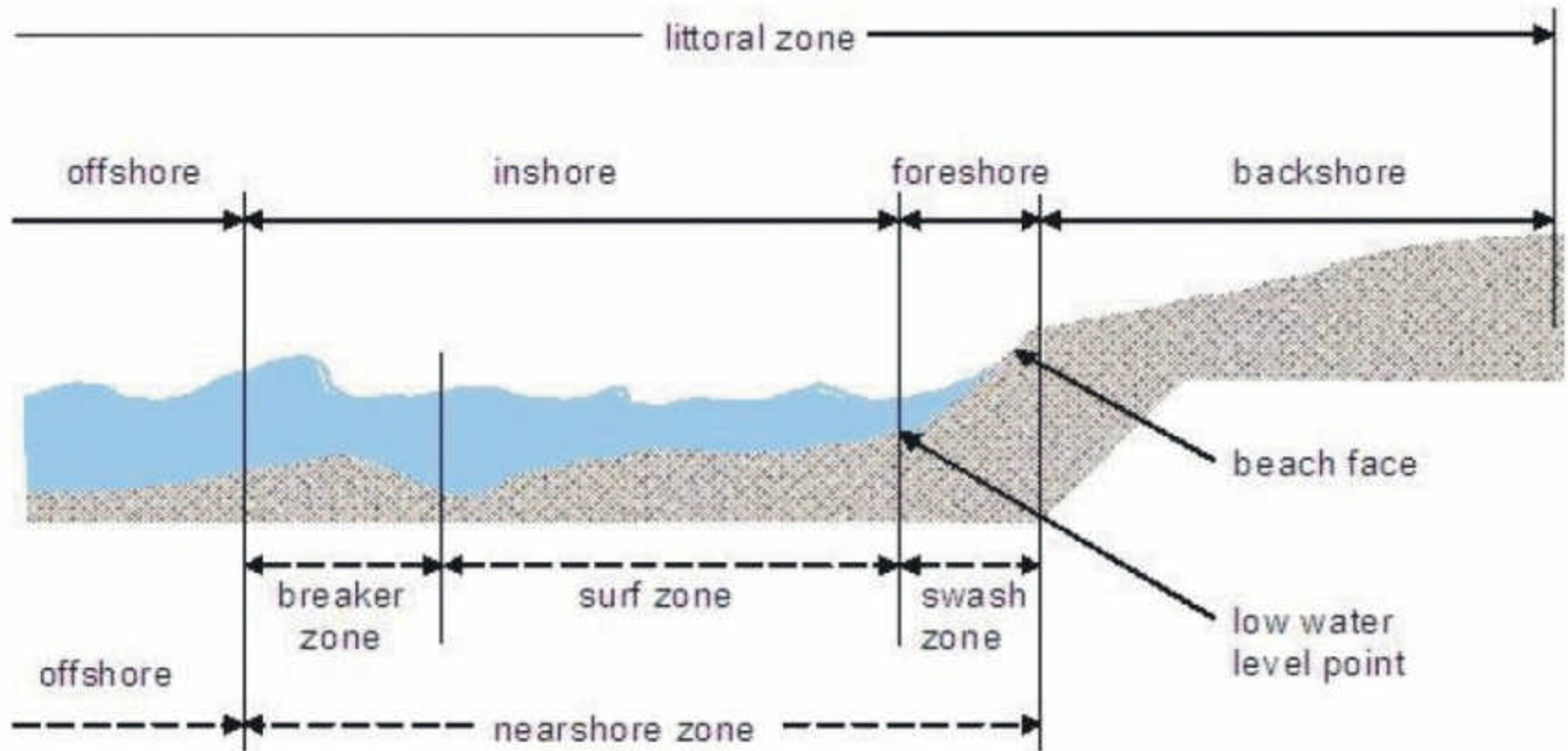


July 25, 2005

STA	E.coli
7	130
8	
9	60
10	140
11	90
12	< 10
13	< 10
14	60
15	< 10
16	10
17	< 10
18	20
19	50
20	< 10
21	< 10

0 100 200 Meters

Research by others



Conclusions

- Rainfall can be variable N to S, E to W
 - Sources still coming from streams to beach areas
 - Fine sediment transport still affecting some beaches, especially those with sheltering coastal structures
 - Other work should also help interpret beach quality in future – especially the significance of the swash zone findings as they become available
-

Recommendations

- Partnership to provide enhanced water quality modeling in the Tiny Township Coast should be sought in 2006 in conjunction with other studies
 - Investigation of streams as sources and beaches should continue
-